



# RETROJET™

UNIVERSAL IN-FLOOR  
NOZZLE REPLACEMENTS

## Installation Manual

For replacing: A&A Quikclean1, A&A Quikclean2, A&A Quikclean Gamma 3, Caretaker 99, Caretaker 99 Threaded, Net'N'Clean and Pool Valet

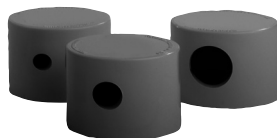
This installation guide walks you through the steps involved in removing an existing cleaning nozzle and properly installing a new Retrojet.



1. Use removal tool made for existing nozzle to remove one nozzle at a time by rotation 1/4 turn counter clockwise to unlock. The system is hydraulically balanced, so the same size nozzle needs to go back into the appropriate hole.



2. Check the size of the opening on the existing nozzle and then select the closest RetroJet cap from the pack of three provided in the replacement kit.



3. Select nozzle size.

004-027-8783-00

REV041816

US and Foreign patents and patents pending see [www.1paramount.com/about/patents/](http://www.1paramount.com/about/patents/)



295 East Corporate Place • Suite 100 • Chandler, AZ 85225

Toll Free: 1.800.621.5886 • Phone: 480.893.7607

Fax: 480.753.3397

Paramount@1Paramount.com • [www.1Paramount.com](http://www.1Paramount.com)



# Paramount

Pool Life. Simplified.

## TWIST LOCK CAP INSTALL FOR

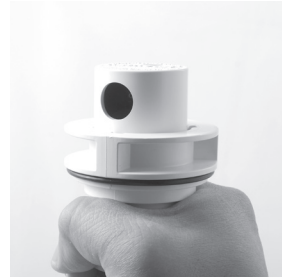
A&A Quikclean1, A&A Quikclean2, A&A Quikclean Gamma 3,  
Caretaker 99, Caretaker 99 Threaded, Net'N'Clean



Grip the nozzle tightly and place the cap on the nozzle. It will only go on and twist one way.



Turn cap clockwise until it snaps into place.



To remove the cap twist cap counter clockwise.

## TWIST LOCK CAP INSTALL FOR POOL VALET



Select nozzle size from pool plan and using the nozzle tool #004-552-5452-00 to twist on caps.



Place the nozzle inside the nozzle tool to hold it from spinning as you twist on the cap.



Place the cap on the nozzle. It will go on and twist one way.



Turn cap clockwise until it snaps into place.



4. Press the top of the complete RetroJet nozzle onto the three prongs of the RetroJet installation tool\*. Guide the nozzle into the hole in the pool floor and then rotate clockwise 1/4 turn to lock in place. Allow the nozzle to cycle through the cleaning process to ensure that it was installed properly.